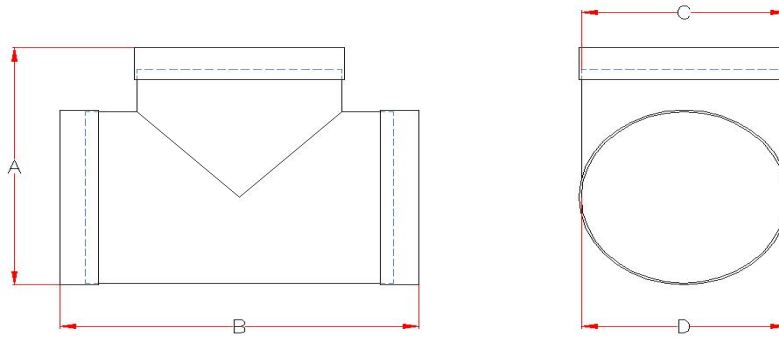




Submittal Data Information
PVC 90° Tee Branch

DIMENSIONS:



STANDARD SIZE PVC 90° TEE BRANCH SPECIFICATION CHART						
MODEL NO.	NOMINAL REDUCER SIZE	A	B	C	D	"C+D" END TYPE
BR90-6-6	6 ON 6	10.875	14.625	6.625 + 1/16	6.625 + 1/16	SOCKET
BR90-6-7	6 ON 7	11.625	14.625	6.625 + 1/16	7.375 + 1/16	
BR90-6-8	6 ON 8	12.875	14.625	6.625 + 1/16	8.625 + 1/16	
BR90-6-9	6 ON 9	13.625	14.625	6.625 + 1/16	9.375 + 1/16	
BR90-6-10	6 ON 10	15	14.625	6.625 + 1/16	10.75 + 1/16	
BR90-6-12	6 ON 12	17	14.625	6.625 + 1/16	12.75 + 1/16	
BR90-6-14	6 ON 14	18.187	18.625	6.625 + 1/16	14 + 1/16	
BR90-6-16	6 ON 16	20.196	18.625	6.625 + 1/16	16 + 1/16	
BR90-6-18	6 ON 18	22.196	18.625	6.625 + 1/16	18 + 1/16	
BR90-6-20	6 ON 20	24.219	20.625	6.625 + 1/16	20 + 1/16	
BR90-6-24	6 ON 24	28.249	20.625	6.625 + 1/16	24 + 1/16	
BR90-7-7	7 ON 7	11.625	15.375	7.375 + 1/16	7.375 + 1/16	
BR90-7-8	7 ON 8	12.875	15.375	7.375 + 1/16	8.625 + 1/16	
BR90-7-9	7 ON 9	13.625	15.375	7.375 + 1/16	9.375 + 1/16	
BR90-7-10	7 ON 10	15	15.375	7.375 + 1/16	10.75 + 1/16	
BR90-7-12	7 ON 12	17	15.375	7.375 + 1/16	12.75 + 1/16	
BR90-7-14	7 ON 14	18.25	19.375	7.375 + 1/16	14 + 1/16	
BR90-7-16	7 ON 16	20.187	19.375	7.375 + 1/16	16 + 1/16	
BR90-7-18	7 ON 18	22.196	19.375	7.375 + 1/16	18 + 1/16	
BR90-7-20	7 ON 20	24.219	21.375	7.375 + 1/16	20 + 1/16	
BR90-7-24	7 ON 24	28.249	21.375	7.375 + 1/16	24 + 1/16	
BR90-8-8	8 ON 8	12.875	16.625	8.625 + 1/16	8.625 + 1/16	
BR90-8-9	8 ON 9	13.625	16.625	8.625 + 1/16	9.375 + 1/16	
BR90-8-10	8 ON 10	15	16.625	8.625 + 1/16	10.75 + 1/16	
BR90-8-12	8 ON 12	17	16.625	8.625 + 1/16	12.75 + 1/16	
BR90-8-14	8 ON 14	18.187	20.625	8.625 + 1/16	14 + 1/16	
BR90-8-16	8 ON 16	20.196	20.625	8.625 + 1/16	16 + 1/16	
BR90-8-18	8 ON 18	22.196	20.625	8.625 + 1/16	18 + 1/16	
BR90-8-20	8 ON 20	24.219	22.625	8.625 + 1/16	20 + 1/16	
BR90-8-24	8 ON 24	28.249	22.625	8.625 + 1/16	24 + 1/16	
BR90-9-9	9 ON 9	13.625	17.375	9.375 + 1/16	9.375 + 1/16	
BR90-9-10	9 ON 10	15	17.375	9.375 + 1/16	10.75 + 1/16	
BR90-9-12	9 ON 12	17	17.375	9.375 + 1/16	12.75 + 1/16	
BR90-9-14	9 ON 14	18.187	21.375	9.375 + 1/16	14 + 1/16	

STANDARD SIZE PVC 90° TEE BRANCH SPECIFICATION CHART						
MODEL NO.	NOMINAL REDUCER SIZE	A	B	C	D	"C+D" END TYPE
BR90-9-16	9 ON 16	20.196	21.375	9.375 + 1/16	16 + 1/16	SOCKET
BR90-9-18	9 ON 18	22.196	21.375	9.375 + 1/16	18 + 1/16	
BR90-9-20	9 ON 20	24.219	23.375	9.375 + 1/16	20 + 1/16	
BR90-9-24	9 ON 24	28.249	23.375	9.375 + 1/16	24 + 1/16	
BR90-10-10	10 ON 10	15	18.75	10.75 + 1/16	10.75 + 1/16	
BR90-10-12	10 ON 12	17	18.75	10.75 + 1/16	12.75 + 1/16	
BR90-10-14	10 ON 14	18.187	22.75	10.75 + 1/16	14 + 1/16	
BR90-10-16	10 ON 16	20.196	22.75	10.75 + 1/16	16 + 1/16	
BR90-10-18	10 ON 18	22.196	22.75	10.75 + 1/16	18 + 1/16	
BR90-10-20	10 ON 20	24.219	24.75	10.75 + 1/16	20 + 1/16	
BR90-10-24	10 ON 24	28.249	24.75	10.75 + 1/16	24 + 1/16	
BR90-12-12	12 ON 12	17	20.75	12.75 + 1/16	12.75 + 1/16	
BR90-12-14	12 ON 14	18.187	24.75	12.75 + 1/16	14 + 1/16	
BR90-12-16	12 ON 16	20.196	24.75	12.75 + 1/16	16 + 1/16	
BR90-12-18	12 ON 18	22.196	24.75	12.75 + 1/16	18 + 1/16	
BR90-12-20	12 ON 20	24.219	26.75	12.75 + 1/16	20 + 1/16	
BR90-12-24	12 ON 24	28.249	26.75	12.75 + 1/16	24 + 1/16	
BR90-14-14	14 ON 14	20.187	26	14 + 1/16	14 + 1/16	
BR90-14-16	14 ON 16	22.196	26	14 + 1/16	16 + 1/16	
BR90-14-18	14 ON 18	24.196	26	14 + 1/16	18 + 1/16	
BR90-14-20	14 ON 20	26.219	28	14 + 1/16	20 + 1/16	
BR90-14-24	14 ON 24	30.249	28	14 + 1/16	24 + 1/16	
BR90-16-16	16 ON 16	22.196	28	16 + 1/16	16 + 1/16	
BR90-16-18	16 ON 18	24.196	28	16 + 1/16	18 + 1/16	
BR90-16-20	16 ON 20	26.219	30	16 + 1/16	20 + 1/16	
BR90-16-24	16 ON 24	30.249	30	16 + 1/16	24 + 1/16	
BR90-18-18	18 ON 18	24.196	30	18 + 1/16	18 + 1/16	
BR90-18-20	18 ON 20	26.219	32	18 + 1/16	20 + 1/16	
BR90-18-24	18 ON 24	30.244	32	18 + 1/16	24 + 1/16	
BR90-20-20	20 ON 20	27.219	34	20 + 1/16	20 + 1/16	
BR90-20-24	20 ON 24	31.249	34	20 + 1/16	24 + 1/16	
BR90-24-24	24 ON 24	31.249	38	20 + 1/16	24 + 1/16	

CONSTRUCTED FROM PVC DUCT FOR USE IN VENTILATION SYSTEMS

FITTING PIECES TRIPLE-PASS WELDED USING 5/32" PVC WELDING ROD

ALL DIMENSIONS IN INCHES